

**BURNT MOUNTAIN**

The Burnt Mountain area originates from the summit of Burnt Mountain and features much of the steepest sidecountry terrain at Sugarloaf. It is hand cut, with a mix of tight, narrow glades and wider expanses. The summit of Burnt Mountain can be accessed via the Burnt Mountain hiking trail, which begins at the terminus of the Golden Road.

**EASTERN TERRITORY**

The Eastern Territory represents the far eastern region of Burnt Mountain. This area is logged by a commercial harvester, and features a mix of wide open glades and logging roads. The logging roads all lead to two large log yards, which can be used as reference points.

**BRACKETT BASIN®**

Brackett Basin® is the first area accessed off the King Pine lift. It is hand cut, and features a mix of steep, narrow glades, wider expanses, as well as several small cliff bands. You can ski back to the King Pine or Whiffletree lifts from anywhere in Brackett Basin®.

**The Snowfields™** (SEE INSET)

SUMMIT 4,237'



**Fuel your mountain adventures with fare from one of our slopeside eateries. Order online at [dining.sugarloaf.com](http://dining.sugarloaf.com)**

**To 7 Sugarloaf Outdoor Center**  
 Nordic Skiing + Snowshoeing + Ice Skating  
 See Guest Services for maps and operating hours.

- KEY**
- ◆ EXPERTS ONLY (use extreme caution)
  - ◆ MOST DIFFICULT
  - ◆ MORE DIFFICULT
  - ◆ EASIER
  - ◆ WILD THINGS (not groomed)
  - ◆ SLOW AND FAMILY SKIING
  - ◆ FRIENDLIEST WAY DOWN
  - ◆ FREESTYLE TERRAIN
  - ◆ SKI AREA BOUNDARY
  - ◆ GOLDEN ROAD
  - ◆ BURNT MOUNTAIN TRAIL (some skier traffic between Kennebec Glade and Upper Log Yard)
  - ◆ WHIFFLETREE EGRESS (some walking required)
  - ◆ KING PINE X-CUT
  - ◆ SNUBBER EGRESS (slower route; no walking required. Connects with trail network at the base of the Snubber lift)
  - ◆ LOGGING ROAD
  - ◆ CAT SERVICE ROAD
  - ◆ DENOTES UNDEVELOPED TERRAIN
  - ◆ SKIN ROUTE
- FACILITIES**
- BL BASE LODGE
  - SI SUGARLOAF INN
  - SI SUGARLOAF MOUNTAIN HOTEL
  - SC SPORTS & FITNESS CENTER
  - CC CHILD CARE - GONDOLA VILLAGE

- LIFTS (MEASURED IN VERTICAL FEET)**
- HIGH-SPEED QUADS**
- A WHIFFLETREE™ 1,120'
  - B SUGARLOAF SUPERQUAD™ 1,750'
  - C BUCKSAW EXPRESS™ 1,441'
- QUADS**
- D KING PINE 1,074'
  - E TIMBERLINE 980'
  - F SKYLINE 1,454'
  - G TRIPLE CHAIR
  - H SNUBBER 400'
  - I DOUBLE CHAIRS
  - J SKIDWAY 143'
  - K SAWDUSTER 130'
  - L DOUBLE RUNNER EAST 617'
  - M DOUBLE RUNNER WEST 1,014'
  - N WEST MOUNTAIN 1,275'
  - O SURFACE LIFTS
  - P BATEAU T-BAR 973'
  - Q MOOSECALATOR
  - R CVA COLBY T-BAR 476'

**LIFT AND TRAIL HOURS**

Lifts are open at 8:30am to 3:45pm with the exception of King Pine and Whiffletree, which open at 9:00am midweek, Timberline at 9:00am daily, and Snubber at 8:00am weekends and holidays. Brackett Basin® closes at 3:00pm.

**LIFTS**

25,388 skiers per hour  
 15 lifts total  
 3 high-speed Quads®  
 3 Quads  
 5 doubles  
 3 surface lifts  
 1 triple

**TRAILS**

65 miles of trails  
 176 trails and glades  
 3.5 miles (our longest trail)  
 1,360 skiable acres

**ELEVATION**

4,237' (Maine's highest skiable peak)  
 2,820' continuous vertical drop  
 1,417' base

**SNOW**

200" average snowfall  
 618 acres snowmaking coverage

- THE SNOWFIELDS™**
- 1 HIGH RIGGER
  - 2 HARD TACK
  - 3 JAGGER
  - 4 PURGE
  - 5 IGNITOR
  - 6 POWDER KEG
  - 7 WHITE NITRO EXT.
  - 8 BUBBLECUFFER EXT.
  - 9 GONDOLA LINE EXT.
  - 10 NARROW GAUGE EXT.
  - 11 WINTER'S WAY EXT.
  - 12 ADRENALINE RUSH
  - 13 BALL AND CHAIN
  - 14 EXTREME CHUTE
  - 15 AWESOME
  - 16 HELL'S GATE
- GLADES AND CONNECTING TRAILS**
- 17 OLD WINTER'S WAY
  - 18 CANT HOOK GLADE
  - 19 WHITE NITRO
  - 20 BLADE GLADE
  - 21 STUMP SHOT GLADE
  - 22 SLUICE CHUTE
  - 23 SLUICE HEADWALL
  - 24 WEST SLUICE CHUTE
  - 25 GIN POLE
  - 26 PICK POLE
  - 27 PINCH
  - 28 TIN PANTS
  - 29 BRIDLE CHAIN
  - 30 FRED'S PITCH GLADE
  - 31 BOOMER GLADE
  - 32 MID STATION X-CUT
  - 33 CRIBWORKS
  - 34 UPPER SHEER BOOM
  - 35 KICK BACK
  - 36 SWEDISH FIDDLE GLADE
  - 37 BIRCH HOOK
  - 38 WINDROW EXT.
  - 39 BUCKSAW X-CUT
  - 40 RAKER TOOTH GLADE
  - 41 BROCCOLI GARDEN
  - 42 STUB'S GLADE
  - 43 MOOSE ALLEY
  - 44 BLUEBERRY'S GROVE
  - 45 ROOKIE RIVER
  - 46 LOWER ROOKIE RIVER
  - 47 KERF GLADE
  - 48 PICARON
  - 49 LOWER SPILLWAY
  - 50 TOTE ROAD X-CUT
  - 51 RAM PASTURE GLADE
  - 52 BOOMSOOTER
  - 53 SCHIPPER'S STREAK
  - 54 BARBER CHAIR GLADE
  - 55 SKID ROW
  - 56 JACK POT GLADE
  - 57 BRANDING AX GLADE
  - 58 GREENHORN GLADE
  - 59 GONDI GLADE
  - 60 ALICE'S WINTER LAND GLADE
- BURNT MOUNTAIN AND BRACKETT BASIN®**
- 61 GOLDEN ROAD
  - 62 BIRLER GLADE 1
  - 63 BIRLER GLADE 2
  - 64 EDGER GLADE 1
  - 65 EDGER GLADE 2
  - 66 SWEEPER GLADE 1
  - 67 CANT DOG GLADE 1
  - 68 CANT DOG GLADE 2
  - 69 ANDROSCOGGIN GLADE
  - 70 SLASH FIRE GLADE
  - 71 LITTLE ANDROSCOGGIN GLADE
  - 72 KENNEBEC GLADE
  - 73 SWEEPER GLADE 2
  - 74 ROUGH CUT GLADE
  - 75 RED HORSE GLADE
  - 76 BLACKSMITH GLADE
  - 77 HIGH BALL GLADE
  - 78 LOGGING ROAD

**SLOPE SAFETY**

**YOUR RESPONSIBILITY CODE**

- Always stay in control. You must be able to stop or avoid people or objects.
- People ahead or downhill of you have the right-of-way. You must avoid them.
- Stop only where you are visible from above and do not restrict traffic.
- Look uphill and avoid others before starting downhill or entering a trail.
- You must prevent runaway equipment.
- Read and obey all signs, warnings and hazard markings.
- Keep off closed trails and out of closed areas.
- You must know how and be able to load, ride and unload lifts safely. If you need assistance, ask the lift attendant.
- Do not use lifts or terrain when impaired by alcohol or drugs.
- If you are involved in a collision or incident, share your contact information with each other and a ski area employee.

*If you need help understanding the Code, please ask an employee.*

**KNOW THE CODE. IT'S YOUR RESPONSIBILITY.**

Be advised that all fencing, equipment covers, poles, signage and other marking devices are in place to inform you and to indicate a potential hazard or obstacle. These markers will not protect you from injury. It is your responsibility to stay away from marked areas.

**FIRST AID FACILITY**

The First Aid Facility is located at the R.H. Bell Interfaith Chapel off the Birches Slope.  
 In case of emergency Dial Ski Patrol at (207) 237-6994

**SKI WITH CARE**

Under Maine law, a skier assumes the risk of any injury to person or property resulting from any of the inherent dangers and risks of skiing and may not recover from any ski area operator for any injury resulting from any of the inherent dangers and risks of skiing, including, but not limited to: existing and changing weather conditions; existing and changing snow conditions, such as ice, hardpack, powder, packed powder, corn, crust and slush and cut-up, granular and machine-made snow; surface or subsurface conditions, such as dirt, grass, bare spots, rocks, stumps, trees, forest growth or other natural objects and collisions with such natural objects; lift towers, lights, signs, posts, fences, mazes or enclosures, hydrants, water or air pipes, snowmaking and snow-grooming equipment, marked or lift trail maintenance vehicles and snowmobiles, and other man-made structures or objects; variations in steepness or terrain, whether natural or as a result of slope design, snowmaking or grooming operations, including, but not limited to, freestyle terrain, jumps, roads and catwalks or other terrain modifications; the presence of and collisions with other skiers; and the failure of skiers to ski safely, in control or within their own abilities.

Skiing and snowboarding in Sugarloaf Mountain's gladed terrain requires good judgment and personal awareness. Access in and out of these glades can be challenging. The gladed regions are vast and the ski patrol's ability to locate lost or injured patrons may be hindered by the scope of the terrain. All skiers and snowboarders are encouraged to enter the glades in groups of 3 or more and not travel alone. Most of this area is left in its natural state. It contains unmarked hazards including cliffs, rocks, fallen trees and avalanche hazards. Sugarloaf Mountain strictly forbids skiers and snowboarders from exiting the ski area boundaries and all signs and markers must be obeyed. Glades are for expert skiers and snowboarders only and all guests who enter these areas should be familiar with the trail map and ask questions to ski patrol before proceeding.  
**Do not enter this area after 3:00pm.**

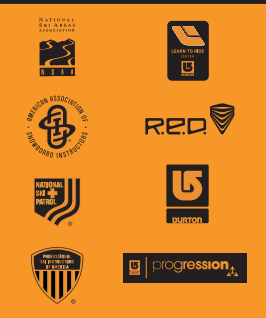
**Start Small**  
 Work your way up. Build your skills.

**Make a Plan**  
 Every feature. Every time.

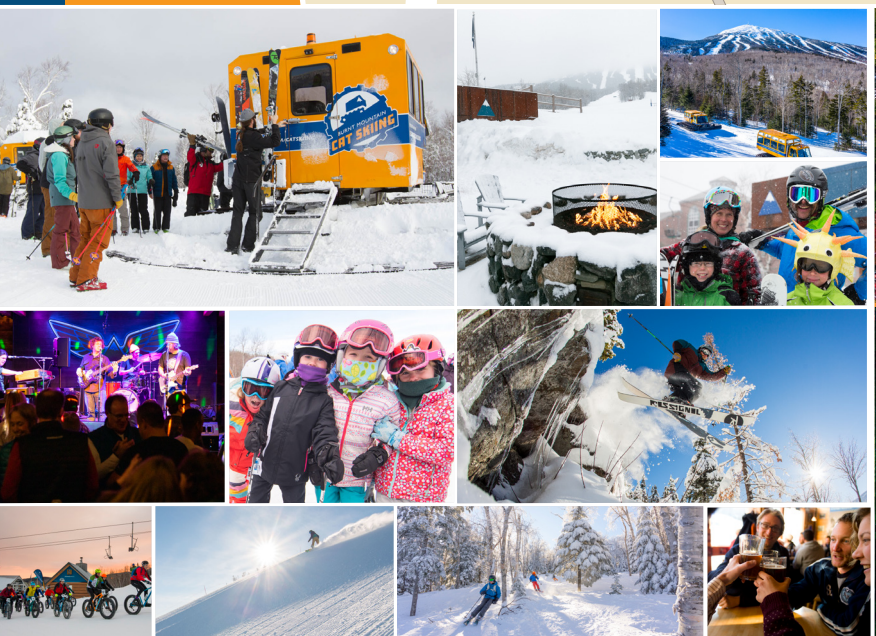
**Always Look**  
 Before you drop.

**Respect**  
 The features and other users.

**Know it, Respect it, Use it!**  
 Take it Easy  
 Know your limits. Land on your feet.



# RESORT MAP



## FOREVER PROJECT

We're committed to sustainability and are working hard to reduce our environmental impact at every level of resort operations. In fact, this map was printed on 10% post-consumer recycled paper. Learn more about our initiatives at: [sugarloaf.com/sustainability](https://sugarloaf.com/sustainability)

- ### SHOPS
- SUGARLOAF CAP CO. 2
  - SBR/BURTON SHOP 7
  - THE SUGARLOAFER SHOP 11
  - KING PINE PROVISIONS 14
  - SKI & SNOWBOARD RENTAL 16
  - DOWNHILL SUPPLY 22
  - LIFE IS GOOD 24
  - AMOS & FRIENDS 39
  - SUGARSHACK DEMO CENTER 41
- ### SERVICES
- PERFECT TURN HUT (meeting place) 1
  - ATM 5
  - SECURITY 6
  - BIRCHWOOD INTERIORS 10
  - COMPETITION CENTER 12
  - SUGARLOAF SKIER SERVICES 19
  - KING PINE ROOM 20
  - SUGARLOAF TICKET KIOSK 21
  - VILLAGE LAUNDRY 23
  - SUGARLOAF CHILD CARE 26
  - MOUNTAINSIDE REAL ESTATE 29
  - R.H. BELL INTERFAITH CHAPEL 33
  - FIRST AID CLINIC (winter) 34
  - SUGARLOAF SPORTS & FITNESS CENTER 37
  - DOWNHILL SUPPLY TUNING & REPAIR 42
- ### RESTAURANTS
- MAS AMIGOS 4
  - THE BAG & KETTLE 8
  - BLACK DIAMOND BURRITOS 9
  - NARROW GAUGE FOOD COURT 13
  - WIDOWMAKER 15
  - WIDOWMAKER BEACH BAR 17
  - FOOD TRUCK LANDING 18
  - D'ELLIES 25
  - 45 NORTH 27
  - JAVA JOE'S 28
  - ALICE & LULU'S 30
  - THE SHIPYARD BREW HAUS 35
  - EIGHTY 8 DONUTS 40
  - SPORTS & FITNESS CENTER CAFÉ 43
- For specific resort information please call 800 THE LOAF (General Questions), 207.237.2000 (Hotel Front Desk), or visit [sugarloaf.com](https://sugarloaf.com).
- ACCESSIBLE ROUTE**  
For accessible routes through the Village look for this signage.

- ### RESTAURANTS
- Whether it's a big breakfast to fuel your turns or a sit-down meal with family and friends, we've got options. Here's a taste of the many on-mountain restaurants at Sugarloaf. Visit [sugarloaf.com/dining](https://sugarloaf.com/dining) for a complete listing where you'll find locations, menus, and online ordering.
- 45 NORTH • 207.237.4220**  
Modern Maine comfort food in a setting reminiscent of the Sugarloaf region's rustic farm houses. Located in the Sugarloaf Mountain Hotel. Breakfast and dinner daily. Call ahead for reservations.
- THE WIDOWMAKER • 207.237.6845**  
This legendary watering hole is the sun-drenched hub of après ski at Sugarloaf and a hot spot for night owls. For a party anytime, live entertainment, slopeside cocktails or a quick in-and-out lunch, visit us upstairs in the Base Lodge.
- BULLWINKLE'S**  
Experience ski-in/out convenience with a view that can't be beat. Located mid-mountain on the Windrow Trail Bullwinkle's offers a full bar, restaurant and a one-of-a-kind Garage Bar and outdoor deck perfect for absorbing those winter rays. Open daily all winter 9:30am-3pm.
- NARROW GAUGE FOOD COURT**  
Start your day or warm up and refuel between runs with a quick breakfast and delicious lunch options. Located in the Base Lodge, the food court is open daily offering grab n' go options along with beer and canned cocktails.
- SPORTS & FITNESS CENTER**  
Ski in or drive up for daily breakfast and lunch items. Located off Mountainside Road and Snubber Chairlift, the café serves an assortment of breakfast sandwiches and grab n' go items like housemade pizzas, salads, sandwiches and more.
- BULL MOOSE CAFÉ**  
Enjoy fresh baked goods, hearty soups, and daily specials from the resort's hidden gem — located at The Sugarloaf Outdoor Center.

# RFID TICKETS

**Keep your Sugarloaf RFID GoCard in an exterior pocket to access lift.**

**Do not** place cell phones, credit cards or foil in the same pocket.

**Did you know** your Sugarloaf GoCard is reloadable? Save time and money by adding a lift ticket for your next visit today at [shop.sugarloaf.com](https://shop.sugarloaf.com).

- ### SHOPS & SERVICES
- DOWNHILL SUPPLY • 207.237.6990** Sugarloaf's premier alpine retailer, offering the latest ski and snowboard equipment, year-round mountain apparel and tuning services.
- SBR BURTON SHOP • 207.237.6829** Stop into the SBR Burton Shop for all of the latest gear and apparel from the biggest names in snowboarding.
- RENTAL EQUIPMENT • 207.237.6951** Rental skis and snowboards are available on the top floor of the Base Lodge, adjacent to the flagpole deck on the slope side of the building, while high-performance demo gear is available at the Sugarshack Demo Center.
- SUGARSHACK DEMO CENTER** New for the 2023/24 winter season, located in the Sugarshack Building at the Beach. Offering high performance demo ski gear from top brands like Vökl, Nordica and Stöckli. Try the newest skis in their lineup before you buy.
- SUGARLOAFER SHOP • 207.237.6718** Your one-stop-shop for Sugarloaf logo gear. From sweatshirts and jackets to home décor, if it has a Sugarloaf logo, you'll find it here.
- LIFE IS GOOD • 207.237.6755** Elevate your mountain wardrobe with Life is Good, exclusively carrying Life is Good products, like tees, hats, hoodies, mugs, and more.
- KING PINE PROVISIONS** Offering a wide variety of cold weather accessories like face masks, gloves and everything in between. Located in the Village Base Lodge King Pine area (this is also where you can store your bag).
- AMOS & FRIENDS • 207.237.6875** Inspired by the infamous children's book Amos The Moose, Amos & Friends celebrates Sugarloaf's favorite mascots, catering to our littlest loafers with treats and treasures. Located on Main Street.
- SUGARLOAF CAP CO. • 207.237.6755** New for the 2023/24 winter season, the Sugarloaf Cap Co. is everything hats. From ball caps to winter beanies, we have lids covering all ages and all sizes.
- DOWNHILL SUPPLY TUNING & REPAIR • 207.237.5067** Located in the Downhill Supply store take advantage of our state-of-the-art Wintersteiger tuning machine. From a quick fix to unforeseen damaged gear our talented staff can fix (almost) anything.

# WELCOME TO WEST MOUNTAIN

Learn more about Sugarloaf's newest development at [sugarloafmountaininside.com](https://sugarloafmountaininside.com)



- Some of the largest slopeside lots anywhere at Sugarloaf** will offer unparalleled privacy combined with easy ski-in/ski-out access. In the summer months these homes will also provide easy access to the Sugarloaf Golf Club, including a potential new 9-hole course now in planning stages. Buyers can build to suit their individual needs, making these easily the most desirable lots in Carrabassett Valley.
- Sugarloaf's newest condominium development** will offer upscale living with the ultimate slopeside convenience. Plans call for options to meet a variety of needs, with units ranging from two to four bedrooms, plus ample gear storage and other amenities.
- Townhouses will offer a dash of luxury to your mountain getaway.** Duplexes will ensure that every unit is an end unit, with high end finishes and ski-in/ski-out convenience, plus proximity to the Sugarloaf Golf Club.
- New parking areas will provide quick and easy access** to Sugarloaf's newest lift — Bucksaw Express, creating ski-in/out parking convenience, plus proximity to the Sugarloaf Golf Course.
- Spanning 120 acres, 12 new trails have been added,** complete with the latest in low energy snowmaking technology. Featuring all beginner and intermediate slopes, the new terrain makes West Mountain the newest hub for family-friendly skiing and riding providing the ultimate ski-in/out convenience for West Mountain homes.
- Bucksaw Express, our new high speed detachable quad** runs from the parking lot access on West Mountain Road all the way up to Bullwinkle's. The lift improves access for West Mountain homeowners offering a 7-day-week operating schedule, vastly reducing ride time and improved wind resistance.

# SUGARLOAF UPHILL ACCESS GUIDELINES

Sugarloaf embraces uphill skinning and snowshoeing. For the safety of everyone on the mountain, we ask that anyone participating in these activities adhere to the following guidelines. All uphill travel is done at each individual's own risk.

**ALL UPHILL SKIERS AND RIDERS MUST READ THE MOUNTAIN REPORT AND CHECK THE SKI PATROL WHITEBOARD LOCATED ON THE SUPERQUAD TRAIL MAP SIGN EVERY DAY PRIOR TO CLIMBING.**

**UPHILL ACCESS ROUTES**  
Due to changing surface conditions, severe weather, mountain operations and other impacting factors ski patrol reserves the right to close or change designated uphill route(s) at any time. For current status of uphill access and route scan QR code.

Burnt Mountain is open to uphill traffic whenever designated by Ski Patrol. Check daily Mountain Report for status.

**TIMING**  
The mountain opens to uphill travel at 7am, and to downhill traffic at 8:30am. No downhill traffic is permitted prior to 8:30am. As always, downhill traffic is limited to open terrain only.

Ski patrol performs closing procedures at end of operating hours every day. After-hours travel of any kind is not allowed on any trails. If you are on the mountain at this time you will be required to ski or ride down.

**EQUIPMENT**  
Uphill travel equipment is required to have metal edges, a restraining device or brakes, and an industry-approved binding. (AT skis, tele skis, splitboard, and snowshoes are all fine.)

Nordic equipment is not permitted above the Base Lodge.

**TICKETS/PASSES**  
All uphill skiers and riders must have a valid season pass or day ticket when on snow. An uphill day ticket is available for purchase online for \$25.00 (does not include lift access). Uphill season passes are available for purchase either online or through Guest Services in the base lodge.

**DOGS**  
Sorry, pets are not permitted on the mountain trail network above the Base Lodge.

**PLEASE NOTE**  
Ski Patrol reserves the right to close the mountain to uphill activities at any time due to severe weather, dangerous surface conditions, or other factors. Ski Patrol may also change the approved routes of uphill travel at any time based on mountain operations.

**THE MOUNTAIN REPORT**  
Tune in to WSKI-TV 17 for the latest weather and trail conditions. Watch the Mountain Report Live on Friday nights, Saturday, Sunday and Monday mornings and holiday weeks for live condition reports and the latest news from Sugarloaf.

**Outside TELEVISION**  
**WSKI 17 SUGARLOAF**

# 23 TRAIL MAP

# 23 TRAIL MAP

© 2023 SUGARLOAF MOUNTAIN CORPORATION

2023/2024 CORPORATE & EVENT PARTNERS

**BOYNE RESORTS**  
EXPERIENCE THE LIFESTYLE

**Sign up for free and start earning points today.**  
[BoyneRewards.com](https://BoyneRewards.com)

**BOYNE REWARDS™**